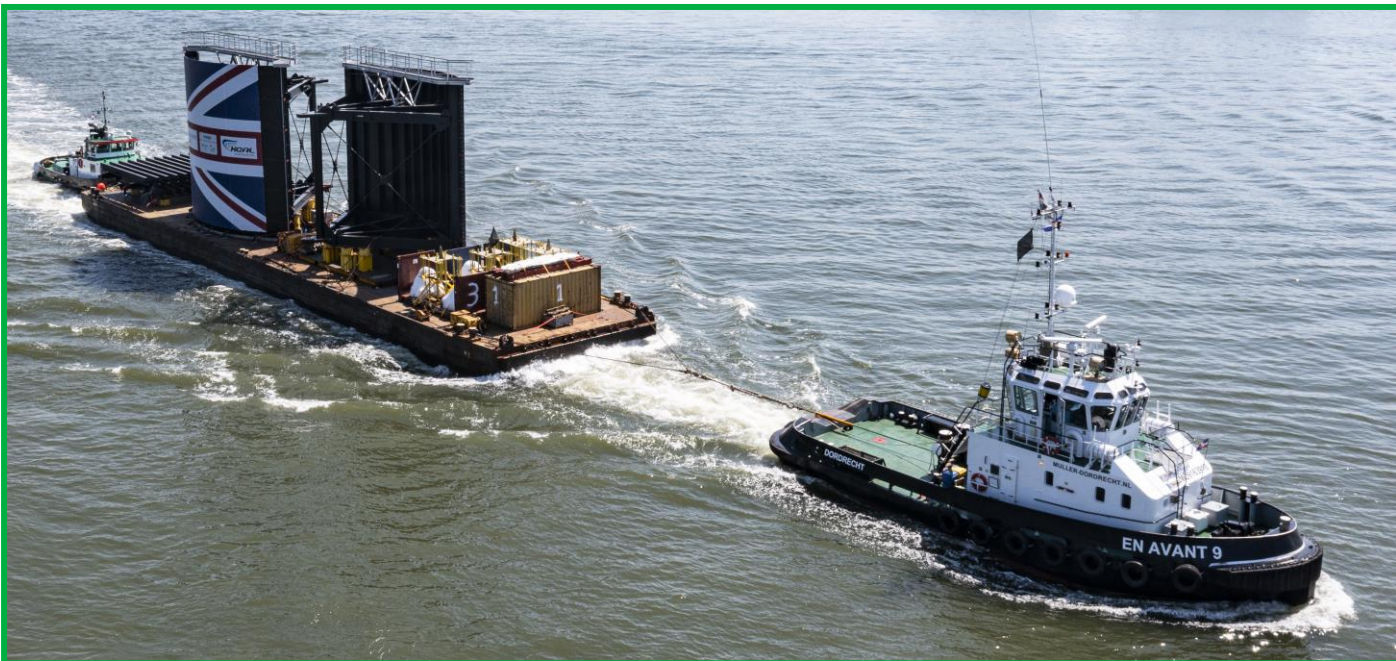


Boston Barrier project update

Once complete, the multi-million pound Boston Barrier scheme will provide better protection against tidal flooding to over 14,000 properties in the area.



Special delivery! The second set of tidal barrier gates arrive on site

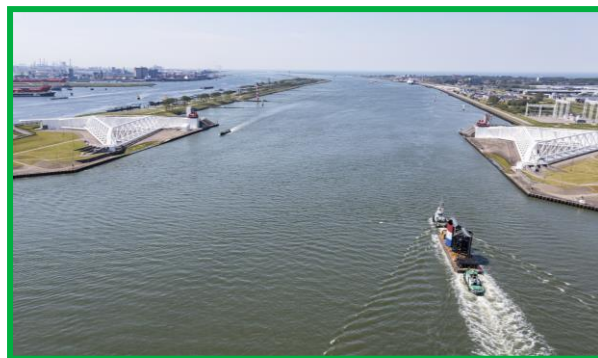
A pair of Vertical Sector Gates were delivered to the Boston Barrier site on Friday 4th June marking another major milestone for the scheme.

The gates (above) were delivered to their new home at the Port of Boston after being transported across the North Sea from Rotterdam by barge, in a similar way to the primary barrier gate delivery, which officially opened in December 2020.

Together the new gates are 18m wide, reach 11.5m high and weigh 80 tonnes each and are coated with three layers of a 150 micrometre technical coating, ensuring they have sufficient corrosion protection for their 100-year design lifetime. They will replace the current gates installed at the Port of Boston's wet dock entrance which were overtopped in the 2013 tidal surge.

The gates were lifted by crane from the barge, and are now being safely stored on site. Contractors BMMJV will install them in the wet dock entrance next year. The wet dock entrance gates will be one of the final large components of the Boston Barrier Scheme which is set to be completed by the end of 2022. Once installed and fully operational, the vertical sector gates will better protect a further 524 properties from tidal flooding, taking the total homes and businesses in Boston being better protected by the scheme to more than 14,000.

Fun fact! On the journey to Boston, the gates passed the famous Maeslant Barrier in Rotterdam (right), one of the largest moving structures on earth. Both Boston and Maeslant gates were fabricated by Hollandia Infra, but whilst ours are both 9m wide, the Maeslant's are gargantuan in comparison at 210m each, helping to better protect over 1.5 million people.

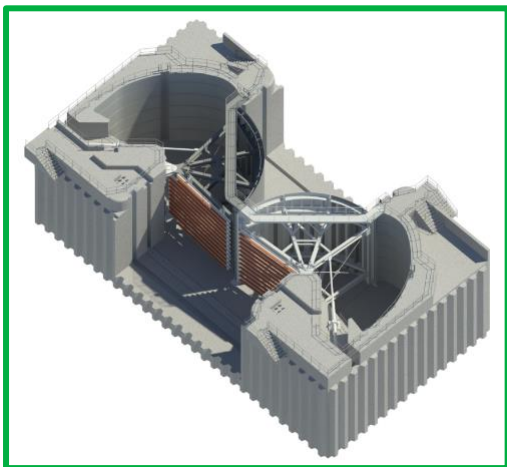


Spotted! A dolphin in the Haven

Unfortunately, this dolphin is not the marine animal that first springs to mind, but a temporary metal structure which will allow ships to turn whilst the Port of Boston's Wet Dock Entrance is closed during the construction works.

Four large piles were first driven into the river bed by a crane on a jack-up barge, to create the base for the dolphin superstructure (right). A cap was then fabricated on dry land before being moved and installed in a single lift for efficiency, and to avoid the team needing to work over water.

The cofferdam pipe bridge which gave access to the primary barrier during works has now been re-purposed to allow access to the dolphin from the Port of Boston.



What's next for the Barrier scheme?

On the South Bank, Boston Horsetail cuttings which were taken at the start of the project and looked after at Cambridge University, have been reintroduced. The Boston Horsetail is a nationally rare plant species and the only plant in the natural flora of Britain which is named after a place in Lincolnshire.

Over on the North Bank the quay wall is nearly complete and final site inspections are now underway before it is handed back to the Port of Boston.

Next steps for contractors BMMJV include closing the wet dock entrance at the Port of Boston. They will bore through the existing base structure in order to build a temporary cofferdam, which will allow the areas to be dewatered and excavated. This enables the team to build the structure (left) where the new vertical sector gates will be installed.

Barrier viewing platform

If you would like to see the Boston Barrier, there is a viewing platform on London Road, opposite Black Sluice Pumping Station.

We politely ask parents and guardians to remind children that although construction sites look like exciting places to explore, they are dangerous and not play areas. The viewing platform is a safe place and a great vantage point to see the barrier but the team can also be contacted for virtual school or special interest group talks if you would like to find out more about the scheme.

If you have any questions or concerns about the ongoing construction works, please contact Gordon Hounslow via mobile on 07939 474 682 or email Gordon.Hounslow@bam.com.

Keep in touch

The Boston Barrier Hub on Marsh Lane is currently closed due to the Covid-19 restrictions, however our team are still working remotely. If you have any questions about the project you can contact us via:

Email: boston.barrier@environment-agency.gov.uk

Facebook: www.facebook.com/BostonBarrier

Blog: bostonbarrier.wordpress.com

Telephone: 07769 937 012

Twitter: @BostonBarrierEA

Instagram: @Boston.Barrier

customer service line
03708 506 506

incident hotline
0800 80 70 60

floodline
03459 88 11 88